



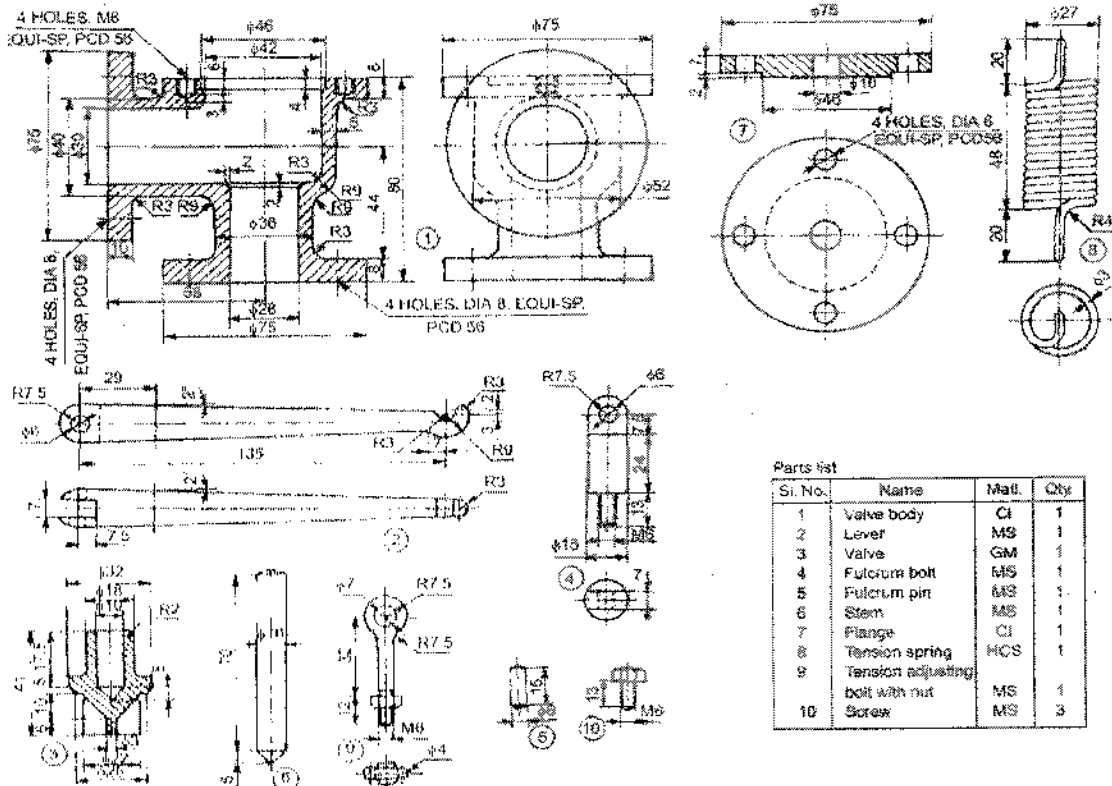
Part A: Answer all the following question:(40 Marks)

1. Sketch (a) sectional view from the front and (b) view from the side of a spur gear with a web.
2. Draw (a) sectional view from the front and (b) view from the side of a hydraulic pipe joint of Socket and Spigot type, to connect two pipes, each of diameter 50 mm.
3. Sketch (a) sectional view from the front and (b) view from the above of solid journal bearing (take shaft diameter = 50 mm).

Part B: Assembly drawing: (60 Marks)

Assemble the parts of a spring loaded relief valve, shown in the shown figure and draw the following views:

(i) Sectional view from the front, and (ii) View from the right.



Good luck