

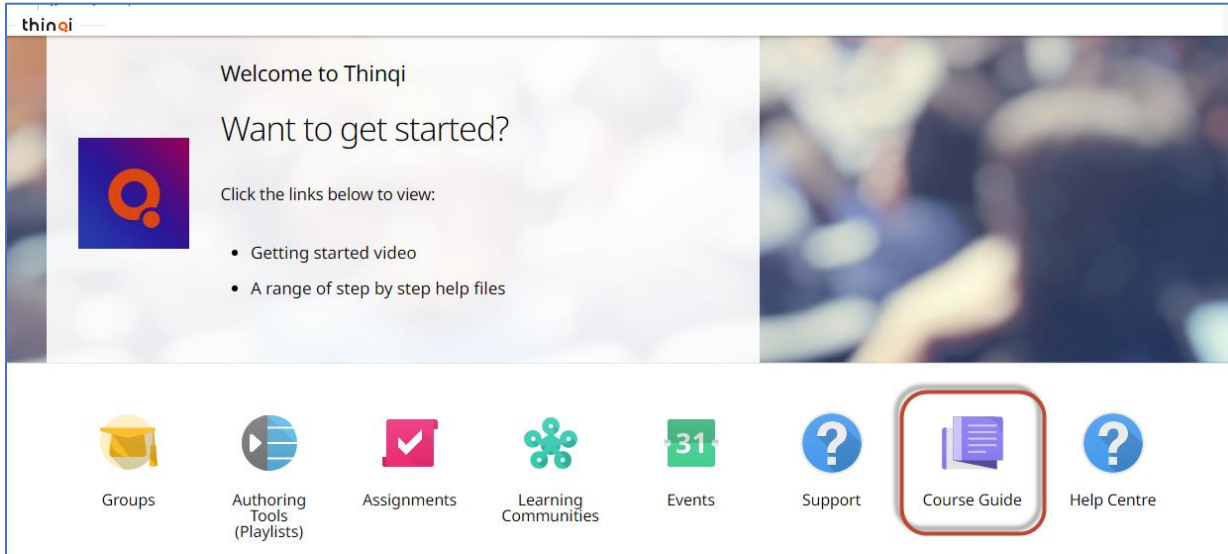


تعليمات أتاحة المقررات للطلاب من خلال منصة (Thinqi)

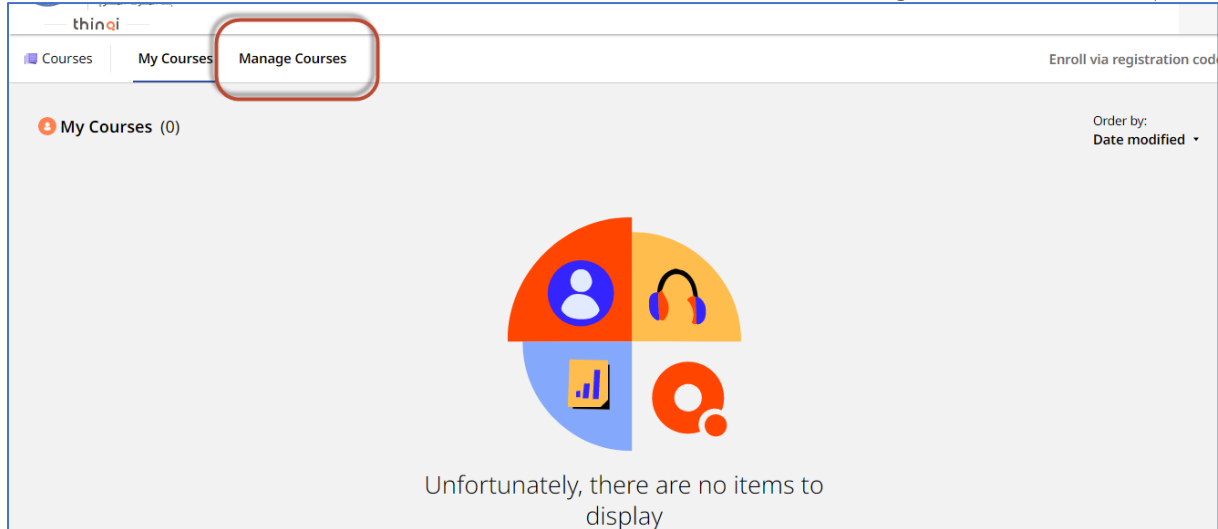
1- يتم تسجيل دخول عضو هيئة تدريس بجامعة القاهرة على منصة **Thinqi** من خلال الرابط التالي

<https://thinqi.cu.edu.eg>

2- يتم اختيار **Course Guide** كما هو موضح في الشكل التالي



3- يتم الضغط على **Manage Courses**





4- يتم اختيار المقرر المراد رفع به المحتوى العلمي

5- يتم بناء المحتوى للمقرر ومن الممكن مشاهدة مكتبة الفيديو الخاص برفع المحتوى من خلال الرابط التالي

<https://thingiacademy.ekb.eg/getting-started>

6- بعد الانتهاء من رفع محتوى المقرر من ملفات وصفحات واقسام ومناقشات و واجبات يتم نشر المقرر من خلال الضغط على **publish** كما هو موضح بالشكل التالي



7- يتم اختيار المقرر المراد نشره واتباع التعليمات ونشر المقرر كما هو موضح بالشكل التالي

Select your privacy settings

The privacy settings determine who can access this course.

Privacy Settings

Current Selection: FCI Academic Division / FCI AD 1 / General Level / 222301 FCI CN602 Advanced Data Centers Structure and Technologies [Clear](#)

Search content folders

<input checked="" type="checkbox"/>	FCI Academic Division / FCI AD 1 / General Level / 222301 FCI CN602 Advanced Data Centers Structure and Technologies	FCI Academic Division / FCI AD 1 / General Level / 222301 FCI CN602 Advanced Data Centers Structure and Technologies
<input type="checkbox"/>	FCI Academic Division / FCI AD 1 / General Level / 222301 FCI CIS602 Advanced Data Centers Structure and Technologies	FCI Academic Division / FCI AD 1 / General Level / 222301 FCI CIS602 Advanced Data Centers Structure and Technologies

< Previous Next Cancel

Version configurations

You can see a summary of changes made since the last published version, leave a comment and name the new version.

[Want to publish this at a later date?](#)

Version comment *Maximum of 500 characters*
(Optional) You can leave a comment outlining the changes made and who this version is intended for.

Version title *Maximum of 100 characters*
(Optional) When left empty the title of the version will be the date and time published.

Current version: 0.0.0
New version: 1.0.0

Changes summary

- Removed: 6
- Added: 10
- Modifications: 3

[View Version history](#)

< Previous Publish Cancel



-8 يتم الضغط علي Cohorts من القائمة اليسار والضغط علي Group 1

222301 FCI CN602 Advanced Data Centers Structure and Technologies
Code: 222301 FCI CN602 Published
Privacy: FCI Academic Division / FCI AD 1 / General Level / 222301 FCI CN602 Advanced Data Centers Structure and Technologies Cohorts: 1

222301 FCI CN602 Advanced Data Centers Structure and Technologies (3 items)

- Untitled section (Concept) 0 items
- Untitled page (Page) No content added
- Untitled page (Page) No content added

Add content options: Section, Page, Files, Embedded link, Select content, Discovery list, Playlist, Assignment, Scorm

222301 FCI CN602 Advanced Data Centers Structure and Technologies
Code: 222301 FCI CN602 Published (v1.0.0)
Privacy: FCI Academic Division / FCI AD 1 / General Level / 222301 FCI CN602 Advanced Data Centers Structure and Technologies Cohorts: 1

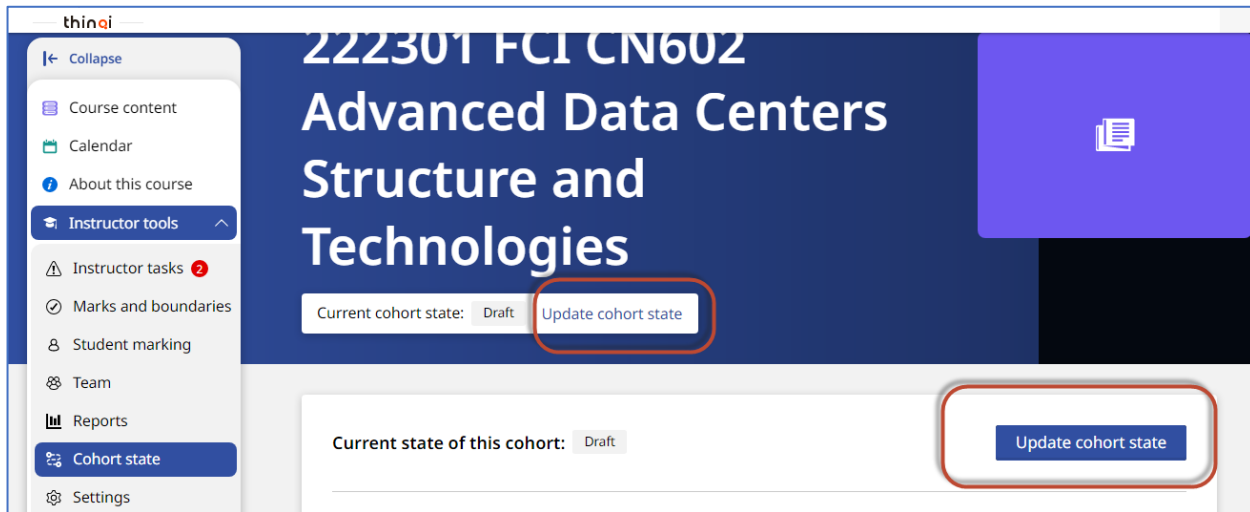
Course cohorts

Order by: Date created Filter by: All + Create new

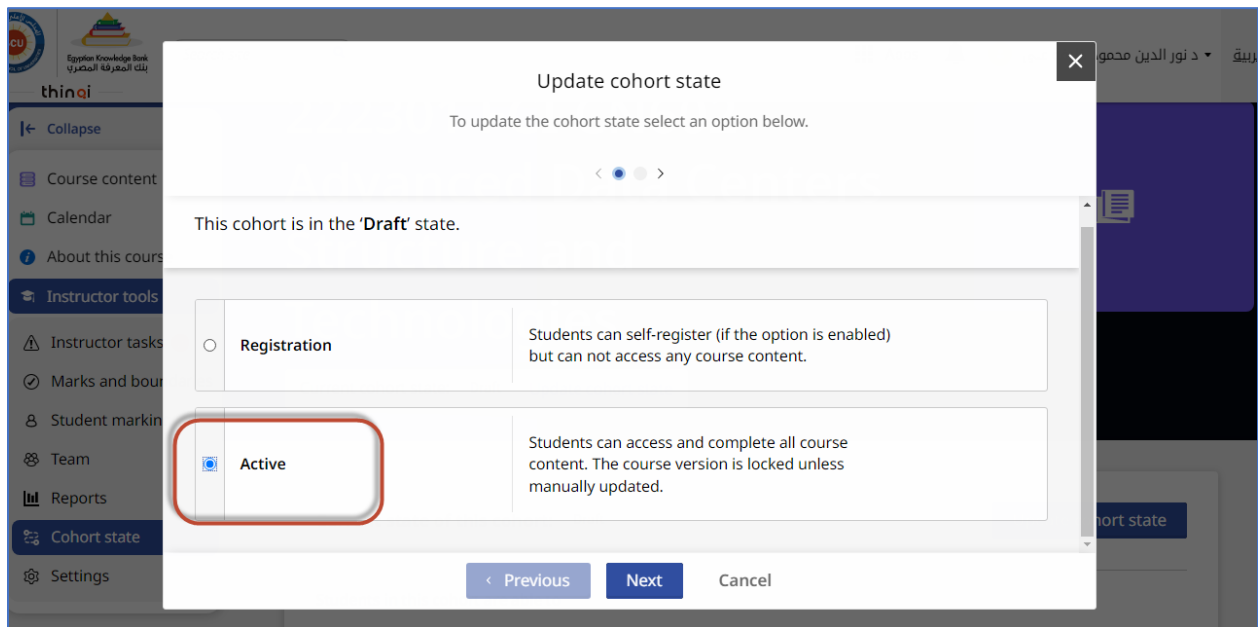
Cohort number	Name	Start date	State	Users	Content version	Created by	Date created
1	Group 1	-	Draft	0	Latest	SIS User	05/10/2022 10:51



9- يتم الضغط علي update cohort state



10 - ثم اختيار active و الضغط علي Next والضغط علي set state to active





You are about to change this cohort's state from 'Draft' to 'Active'. Are you sure you want to continue?

< ● >

Students in this cohort are able to

- Access and complete all course content.

Students will not be able to

- Self-register (if the option is enabled).

Instructors will be able to

- Complete instructor tasks.
- Edit mark schemes and grade boundaries.
- Add students.

< Previous **Set state to 'Active'** Cancel

12 – أصبح الان المقرر متاح للطلاب للاطلاع في حاله إذا تم ربط الطلاب مع المقررات من جانب الكلية اما في حاله اذا كان سيتم الدخول علي المقرر من جانب الطلاب مباشرة – يتم السماح لتسجيل الطلاب في المقرر من خلال الخطوة رقم 13

13- يتم اختيار **Setting** من القائمة اليسار والتي تقع تحت **Instructor Tools** من قائمة اليسار

thinqi

← Collapse

- Course content
- Calendar
- About this course
- Instructor tools**
- Instructor tasks 2
- Marks and boundaries
- Student marking
- Team
- Reports
- Cohort state
- Settings**

Registration options

Self-registration
Allow users to register themselves onto the cohort without needing to manually add or import them. The users will be able to register themselves if they are able to view the folder that the course has been published to.

Registration code
Allows users to enroll onto a cohort via a unique authorable registration code.

LTI integration ⓘ
Enables this cohort to be used as an LTI tool. This cohort can then be enrolled on by users from an external consumer using the LTI basic launch method.

Course version
Monday, 10 October 2022 14:39 **v1.0.0** [Change version](#)



14- يتم تمكين اختيار **self-registration** و **registration code** ومشاركة الكود مع الطلاب

Registration options

Self-registration
Allow users to register themselves onto the cohort without needing to manually add or import them. The users will be able to register themselves if they are able to view the folder that the course has been published to.

Registration code
Allows users to enroll onto a cohort via a unique authorable registration code.

Code
Use the code below to send out to users you want to enroll onto the course.
222301 FCI CN602-1 [View QR code](#)
[Update registration code](#)

LTI integration ⓘ
Enables this cohort to be used as an LTI tool. This cohort can then be enrolled on by users from an external consumer

15- من الممكن تعديل كود الالتحاق بالمقرر من خلال الضغط علي **update registration code** ومشاركة الكود الجديد مع طلاب المقرر من خلال أستاذ المقرر

Registration options

Self-registration
Allow users to register themselves onto the cohort without needing to manually add or import them. The users will be able to register themselves if they are able to view the folder that the course has been published to.

Registration code
Allows users to enroll onto a cohort via a unique authorable registration code.

Code
Use the code below to send out to users you want to enroll onto the course.
222301 FCI CN602-1 [View QR code](#)
[Update registration code](#)

LTI integration ⓘ
Enables this cohort to be used as an LTI tool. This cohort can then be enrolled on by users from an external consumer



16- ويفضل أيضا ان يكون **Course Version** ان يتم تحديثه تلقائيا من خلال الضغط علي **change version** واختيار **automatic update** أو اختيار النسخة المراد نشرها في حاله وجود أي تحديث في محتوى المقرر

The screenshot shows the 'thinqi' interface. On the left is a sidebar with navigation options: Collapse, Course content, Calendar, About this course, Instructor tools (expanded), Instructor tasks (2), Marks and boundaries, Student marking, Team, Reports, Cohort state, and Settings. The main content area is titled 'Registration code' and includes a description, a 'Code' field with the value 'CN602', a 'Copy' button, and a 'View QR code' button. Below this is an 'LTI integration' section with a toggle switch. The 'Course version' section shows the current version as 'Monday, 10 October 2022 14:39 v1.0.0' and a 'Change version' button, which is highlighted with a red circle.

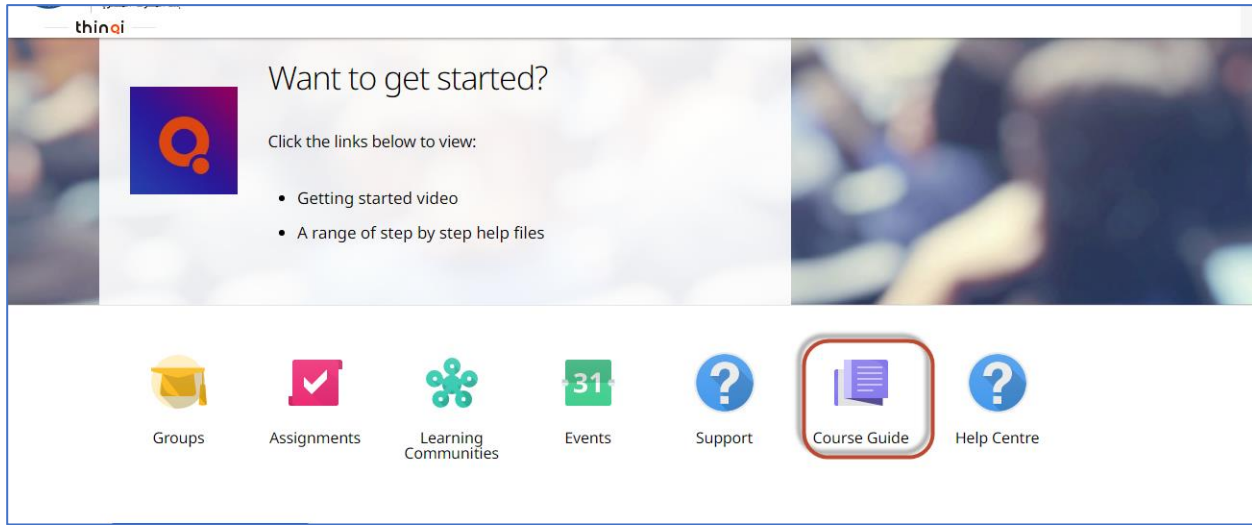
The screenshot shows a 'Change course version' dialog box. It has a search bar for versions. Under 'Available versions', the current version is listed as 'Monday, 10 October 2022 14:39 v1.0.0'. Below it, the 'Automatic Updates' option is selected and highlighted with a red circle. At the bottom of the dialog, there is a 'Change version' button, also highlighted with a red circle, and a 'Cancel' button.



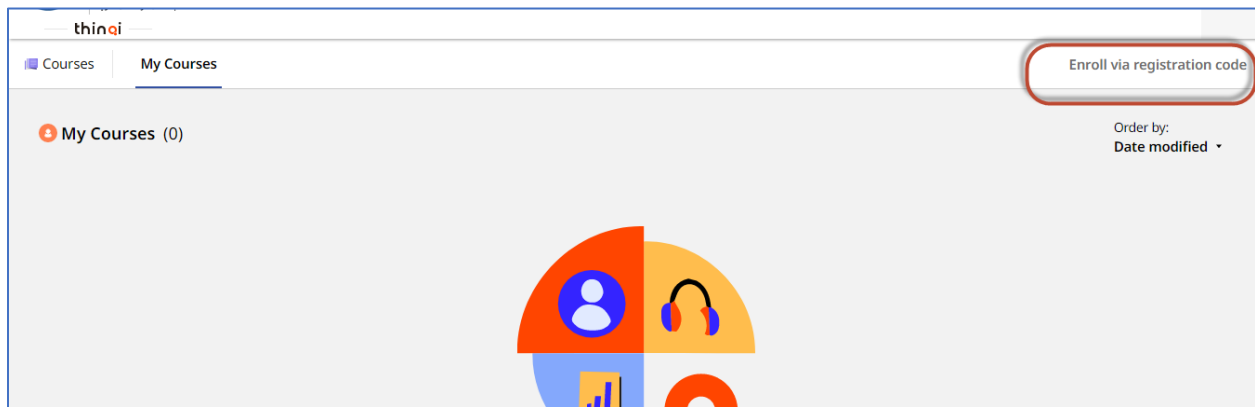
17- عند مشاركة كود المقرر مع الطلاب – يدخل الطالب من خلال الحساب الخاص به من خلال

<https://thinqi.cu.edu.eg>

واختيار **Course Guide**



18- ويضغط الطالب علي **Enroll via registration code** ويضع الكود التي تمت مشاركته مع أستاذ المقرر والضغط علي **Enroll**





مركز الخدمات الإلكترونية والمعرفية
Center of Knowledge & Electronic Services

مركز الخدمات الإلكترونية والمعرفية

Center of Knowledge & Electronic Services



جامعة القاهرة

My Courses

Enroll via reg

Enroll via registration code

Registration code

Please enter the registration code you have been provided below, this will enroll you onto the course and will show up in your 'My courses' list.

CN602

Enroll Cancel

تم تسجيل الطالب في المقرر ويستطيع الاطلاع على المحتوى وأداء الأنشطة التعليمية

thinqi

< Back to my courses

Collapse

Course content

Calendar

About this course

222301 FCI CN602

Advanced Data Centers
Structure and
Technologies

In progress 0% completed

Course content

0 items

مركز الخدمات الإلكترونية والمعرفية